



www.kleemannlifts.com



Head Offices-Export Sales: Kilikis Industrial Area, P.O. Box 25, Post Code 61 100, Kilikis, Greece
Operator: +30 23410 38100, Fax: +30 23410 38200, Email: headoffice@kleemann.gr



Kilikis Industrial Area, P.O. Box 25, Post Code 61 100, Kilikis, Greece
Operator: +30 23410 75730, Fax: +30 23410 75733
Email: commercial@klefer.gr, www.klefer.gr



Yukari Dudullu, Türker, Cad No 34 34775, Ümraniye İstanbul TÜRKİYE
Tel: +90 216 4662267, Fax: +90 216 4662285
Email: info@kleemannturk.com



Golubinač Yka b.b, Eimanovci, Beograd, Serbia - Tel. +38122409000, Fax: +38122409090
E-Mail: office@kleemann.rs



str. Filderman Wilhelm nr. 4 bis, 3 district, Bucharest
Tel: 0314228917, 0770801200, 0770801238, Fax: 0314228916

KL7 CORP ENG 04/10





KLEEMANN GROUP

KLEEMANN was founded in 1983 based on the knowledge and license of the German company Kleemann Hubtechnik GmbH that was established in 1857.

KLEEMANN is committed to manufacturing and providing complete lifts and services that enhance reliability, safety, comfort and aesthetics in the transportation of passengers and goods. Our target is to excel as a "fast and flexible" partner to our customers -lift installation companies- and provide turnkey solutions, customized to their needs before and after the sale.

Our strategy and investment decisions have led to the development of a group of companies that holds a leading position in the domestic and international lift markets.



- 1 KLEEMANN**
Head offices and production facilities in Kilkis, Greece.
- 2 KLEFER**
Lift doors manufacturing company, head offices in Kilkis, Greece.
- 3 KLEEMANN ASANSÖR**
Trading company of complete lifts, headquartered in Istanbul, Turkey.
- 4 KLEEMANN LIFTOVI**
Trading company of complete lifts, located in Belgrade, Serbia-Montenegro.

KLEEMANN VALUES

The continuous growth of KLEEMANN GROUP is based on a system of values, carried out by management and employees daily and consists the corner stone of our philosophy:

- Products of Superior Quality
- Fast and Flexible Service
- Continuous Technical Support



QUALITY POLICY

In the context of its quality policy, KLEEMANN commits itself to designing, manufacturing and offering its customers superior quality products and services. The implemented Quality Assurance System meets all safety and quality requirements as provided in the European legislation.

This System is in compliance with:

- EN ISO 9001: 2000 requirements
- Lift Directive 95/16 EC, Annexes XIII and VIII, Module H and E

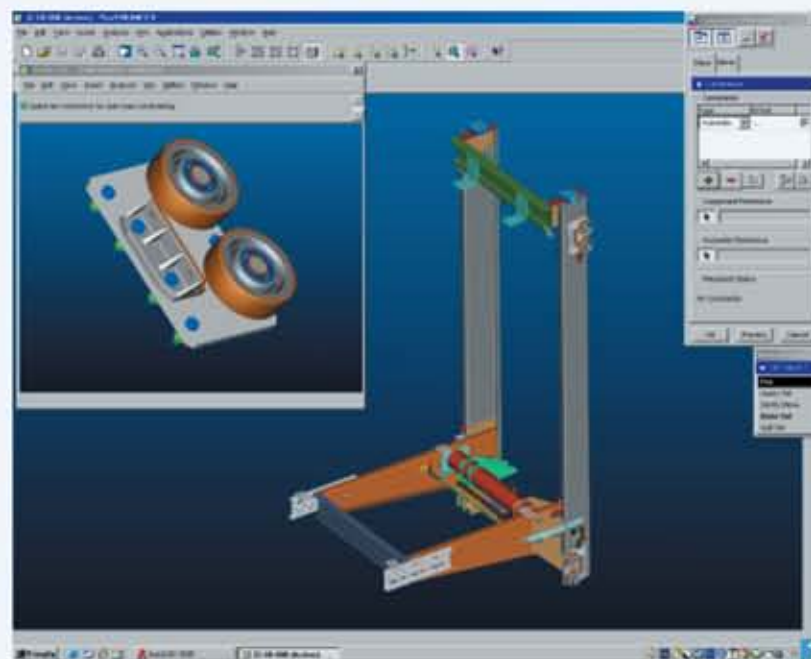
RESEARCH AND DEVELOPMENT

Research and Development is one of the main functions of KLEEMANN and has played a major role in the company's growth. Aiming to meet its customers' needs and focusing on quality and innovation, the R&D department has presented a range of significant accomplishments in the development of new technologies as well as the improvement of existing products.

Based on the extensive knowledge of the lift market and the sound qualifications of our engineers, we create competitive advantages for our customers, committing to offer solutions that provide:

- Safety
- Reliability and effectiveness
- Ease of installation and maintenance
- Cost reduction of materials – installation - operation
- Environmentally friendly operation

We research
your needs



TECHNICAL SUPPORT AND TRAINING

The orientation and focus on customer service is established by:

- Over 100 engineers ready to provide constant and specialised technical support, both on a pre and after sales basis
- Products that are accompanied by detailed technical designs and manuals
- Flexible logistics processes to help reduce delivery time
- Regular technical seminars for the personnel, customers and partners of the company concerning safety and international developments in the lift field
- Technical training programs that equip our customers with theoretical and practical skills in subjects such as lift installation, operation and maintenance

We develop
your confidence



- 1 Computer Aided Design
- 2 Training seminars
- 3 Testing Tower
- 4 Privately owned transportation fleet
- 5 Technical support
- 6 Showroom

KLEEMANN SOLUTIONS

COMPLETE LIFT SYSTEMS

- Complete Hydraulic / Traction systems with machine room
- Arion Hydro MRL
- Atlas Traction MRL
- Mistral Traction MRL
- MaisonLift (Residential Lift)
- Compact, Dumbwaiter

LIFT ASSEMBLIES

- Cabins
 - Passenger Cabins
 - Panoramic
 - Luxury
 - Elegance
 - Classic
 - Professional
 - Gemini
 - Freight/Goods Cabins
- Doors
 - Automatic doors with VVVF
 - Folding Doors
 - Semi-Automatic Landing Doors
 - Circular Doors
 - Modernization doors
- Electronics
 - Car and Landing Operating Panels (COPs – LOPs)
 - Controllers
 - Pre-Wiring
- Traction Elevation Systems
 - Traction Machines – Operators
 - Car Slings
 - Counterweight Slings
 - Governors
 - Guide rails
 - Wire ropes
- Hydraulic Elevation Systems
 - Piston And Cylinder Assembly
 - Power Units
 - Car Slings
 - Guide Rails
 - Wire Ropes
 - Hydraulic Oil



Complet

KLEEMANN is one of the few companies in Europe that offers **complete lift systems** with a wide range of hydraulic or traction technology solutions, with or without machine room. Our company studies the ideal solution for every project and supplies its customers with all the necessary lift components.



WHY BUY A KLEEMANN COMPLETE LIFT?

Because the KLEEMANN COMPLETE LIFT provides you:

- Fast delivery (4 weeks for a complete hydraulic lift!)
- Guaranteed compatibility of all lift components
- Reduction of the total installation and maintenance cost
- Elimination of extra time required for the collection of all lift components
- In advance knowledge of the final cost for a complete lift system
- Detailed technical installation and operation manuals
- Functional packing design
- Compliance with the 95/16 EC directive
- Manufacturing quality and reliability
- KLEEMANN's support and quality

COMPLETE HYDRAULIC / TRACTION SYSTEMS WITH MACHINE ROOM

In buildings where a machine room is possible, KLEEMANN complete lifts are among the most reliable and established solutions in the market.



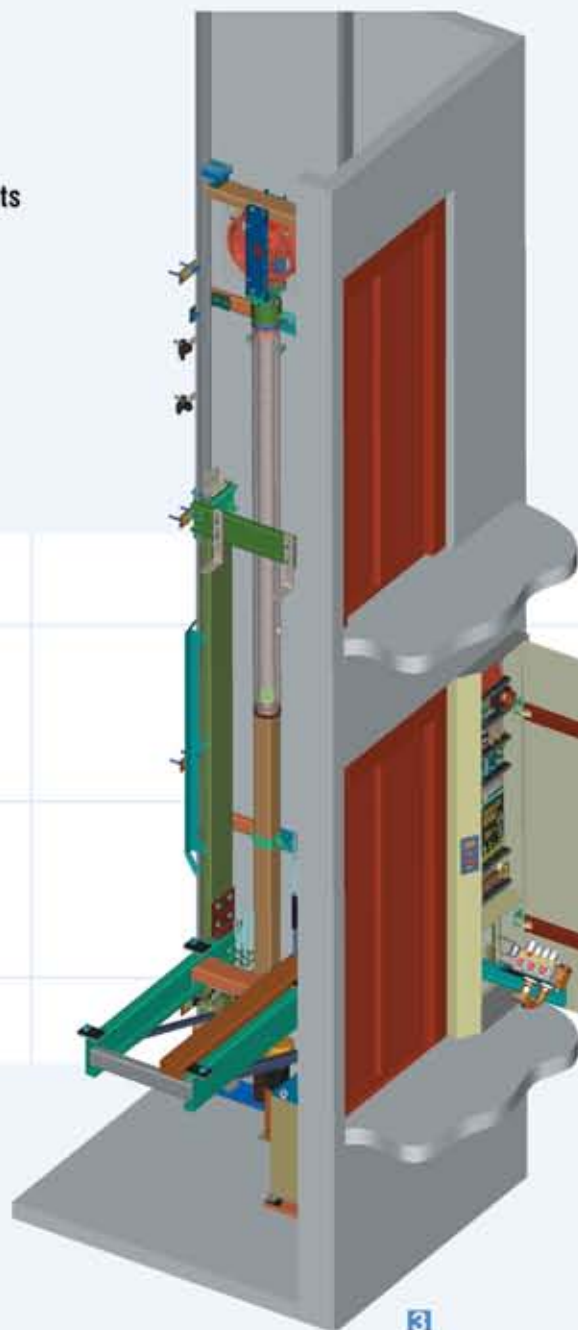
- 1 KLEEMANN lift in shopping center
- 2 KLEEMANN complete lift package ("Complet")
- 3 KLEEMANN hydraulic lift in Macedonia airport, Greece

ARION HYDRO MRL

One of KLEEMANN's contemporary solutions is **ARION** HYDRO MRL, a Hydraulic Machine Room-less Lift. ARION HYDRO MRL incorporates ideally the advantages of a hydraulic lift and the elimination of the requirement for a machine room. The advantages of ARION HYDRO MRL are as follows:

- Capable to fit in small shafts
- Travel up to 20 m (630 kg) or 25 m (1000 kg)
- Speed up to 1 m/sec
- Rated load up to 1000 kg
- Pre – assembled, electrical installation (pre - wiring)
- Automatic emergency evacuation
- Ease of installation and maintenance, minimum respective costs
- Economy
- Reliability
- Comfortable ride
- Fast delivery
- Type Examination Certificate according to Directive 95/16 EC

ARION is available with all passenger cabins



3



1



2

1 Arion Hydro MRL

2 Valve Block

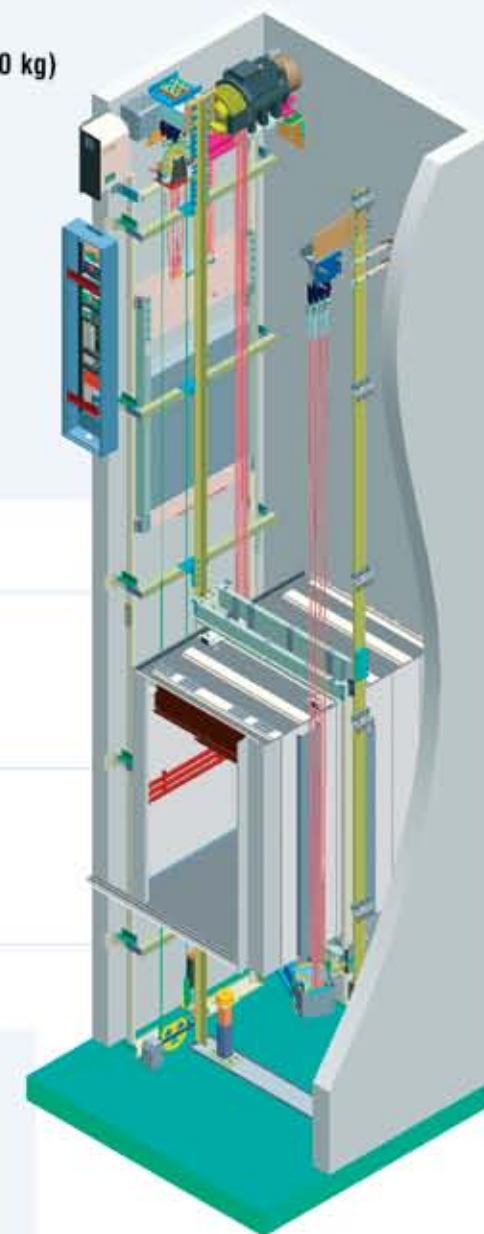
3 3D drawing of Arion MRL

ATLAS TRACTION MRL

ATLAS is an excellent Traction Machine Room-Less lift (MRL) with a gearless machine, ideal to meet the requirements of high-rise buildings with heavy traffic. The characteristics of ATLAS are the following:

- Gearless machine (ZIEHL ABEGG) placed in the top of the shaft
- Maximum safety for movement upwards
- Special design for easy drive installation
- Pre – assembled, electrical installation (pre - wiring)
- Cantilever sling allowing flexible entrance choices (for rated load up to 1050 kg)
- Speed up to 1.6 m/sec
- Load up to 2500 kg
- Type Examination Certificate according to Directive 95/16 EC

ATLAS is available with all passenger cabins



3



1



2

1 Atlas Traction MRL

2 Shaft headroom

3 3D drawing of Atlas MRL

ARION

ATLAS

■ MISTRAL TRACTION MRL

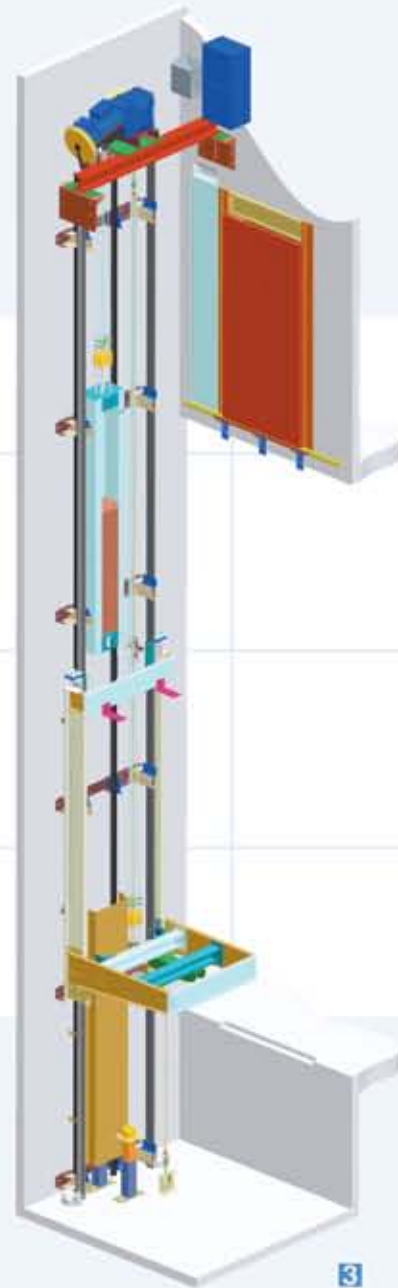
MISTRAL is a Traction Machine Room-Less Lift (MRL) for rated load up to 630 kg. It is a high value Traction MRL able to be fully customized to your needs that guarantees a noiseless and very smooth ride.

SPECIFICATIONS

- VVVF driven (or AC2) gearbox, manufactured by Alberto Sassi
- Fast delivery
- Easy operation of the mechanical emergency release
- Pre - assembled, electrical installation (pre - wiring)
- Easy installation and maintenance
- Type Examination Certificate according to Directive 95/16 EC

MISTRAL is available with all passenger cabins

MISTRAL



3

1 Mistral Traction MRL

2 Shaft headroom

3 3D drawing of Mistral MRL

■ MAISONLIFT

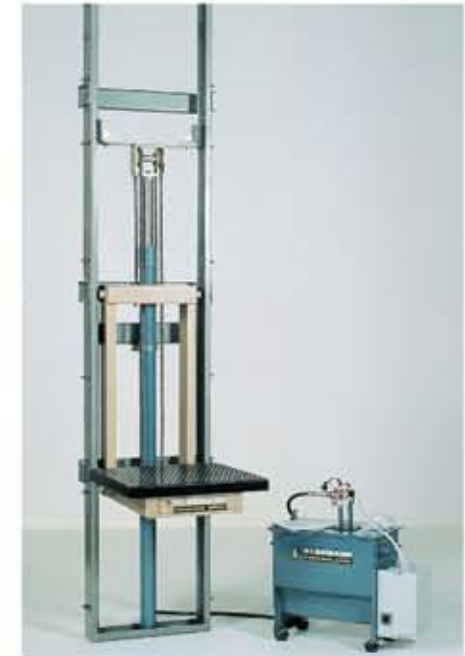
MaisonLift is a hydraulic solution applicable to several types of buildings, such as maisonnettes-villas and, in general, buildings with shaft pit and headroom limitations. MaisonLift may also become the appropriate transportation mean between floors for people with reduced mobility like wheelchair users and the elderly.

- Provides a solution for lift installation in buildings without concrete shaft (aluminum shaft construction)
- Minimal requirements for pit depth dimensions: min 200 mm
- Minimal requirements for headroom dimensions: min 2450 mm
- Automatic emergency evacuation
- Noiseless operation: 45-50db
- Ease of installation
- Low energy consumption: 2-2,5 KWh per month
- Single-phase motor available upon request



■ COMPACT

COMPACT is the hydraulic hoisting machine for freights intended primarily for industrial facilities and warehouses. Reliability of performance, endurance to large freights and harsh work conditions, and full compliance with legislation (CE marking) are characteristics that create the profile of a dependable working tool. The type of your COMPACT is set by the requirements of your place and work, since it adjusts to your standards by the flexibility of its production.



■ DUMBWAITER

For smaller freights, **DUMBWAITER** offers convenience and style to restaurants, coffee shops, stores, warehouses, offices, hotels, houses or any other place you may need it for. Its quiet operation and its capability to adjust to colours and morphology of your building, make DUMBWAITER a precious means of transportation for all types of lightweight goods and objects.

Characteristics:

- From 2 to 4 stops
- Rated Load from 50 to 100 kg
- Noiseless operation



1



2

LIFT ASSEMBLIES

Apart from complete lift solutions, KLEEMANN also provides its customers with the flexibility to acquire lift sub-assemblies based on the project requirements.

CABINS

KLEEMANN cabins are manufactured in a separate, state-of-the-art manufacturing facility staffed by highly qualified personnel with extensive experience in the field. Exceptional quality, wide selection of materials and modern design are some of the main features distinguishing KLEEMANN cabins. Their main advantages are:

- Flexible design tailored to each project requirement
- Fast delivery
- Robust structure that eliminates vibrations during transportation
- Absolute compatibility between the cabin and car sling for improved safety and easier installation
- Materials are carefully selected based on durability and aesthetics
- Wide selection of accessories – COPs – displays etc.
- Design, manufacture, and assembly according to Directive 95/16 EC (paragraph XIII, Module H)



PASSENGER CABINS

PANORAMIC

KLEEMANN panoramic cabins - internal or external - add value to the building, highlighting the uniqueness of its style and design. Ride between floors becomes an exceptional experience with unique comfort. Due to the flexible design and manufacturing process implemented by KLEEMANN, panoramic cabins can meet all requirements and architectural challenges. Through a large variety of designs and interior materials, panoramic cabins may turn into an excellent choice for hotels, shopping centres, office buildings, and other public places. KLEEMANN creates panoramic class, outside or inside your building.

LUXURY

KLEEMANN gives you the ticket for an outstanding ride to the highest state of luxury. Through the **THETIS** and **NAUSICA** models and the large variety of top quality interior materials, add the most luxurious touch to your building!

The numerous combinations of the KLEEMANN LUXURY models may satisfy even the most demanding and special projects. The outcome is a seamless integration of your cabin with the appearance of any building lobby. **THETIS** and **NAUSICA** highlight your personal taste, adding to your building all the selectivity and finesse you can imagine.



NAUSICA



THETIS



HERA



ARTEMIS

ELEGANCE

The elegant design of the **HERA** and **ARTEMIS** models releases the character of your environment setting free all of its positive energy.

A complete range of interior materials gives you the possibility to combine supreme aesthetics with a robust structure, creating a cabin with phenomenal class.

HERA and **ARTEMIS** not only match your lobby as being part of it; they add the elegance that will elevate it.

CLASSIC

ATHENA and **ARIADNE** are distinguished for their fine, classic lines.

These cabins combine in a unique way the discrete design and convenience of a smooth ride.

Specially chosen materials and highly attractive designs are some of the main reasons that have turned these models into the most popular selections. CLASSIC cabins of KLEEMANN are the classic way to decorate your lift.



ATHENA



ARIADNE

PROFESSIONAL

In public buildings with heavy traffic, cabins should embrace durability and functionality. **DANAE** and **IFIGENIA** have been designed to satisfy these requirements. They are manufactured with high quality materials that ensure durability in environments with significant traffic and heavy duty.

DANAE and **IFIGENIA** may optionally be manufactured with antibacterial materials in order to be installed in buildings that require superior levels of hygiene like hospitals, supermarkets etc.



IFIGENIA



DANAE

DOORS

KLEEMANN, through its subsidiary KLEFER SA - a joint venture with Tecnolama Fermator Spain, one of the largest companies in its field - presents a wide selection of lift doors. High quality, superior style and design, are the principles under which lift doors are produced in the state-of-the-art industrial facilities of KLEFER SA. The offered product range includes **VVVF automatic doors**, **BUS and FLAT folding doors** as well as **semi-automatic landing doors**.



GEMINI

GEMINI is the latest cabin proposal of KLEEMANN equipped with the characteristics of functionality in cases of modernization, reduced assembly time and fast delivery. **GEMINI** is designed in such a way that can be assembled by only one technician, quickly and easily.

Additionally, **GEMINI** has proved to be very practical and functional when it comes to modernization and renovation. It can be decorated with twin-face laminate that may easily be switched when scratched or destroyed.



VVVF AUTOMATIC DOORS

Using the most advanced VVVF control system in the market exclusively designed for automatic lift doors, KLEFER automatic doors offer:

- Easy installation, maintenance and automatic adjustment
- Long lasting components with low maintenance costs
- Automatic emergency evacuation in case of electric power failure
- Certified fire rating
- Full compliance with the European Directives 95/16 and international standards
- Compatibility with any lift controller available in the lift market
- Ideal solution for lift modernization
- "Intelligent" photocell that is automatically deactivated in case of permanent interruption (provided as a standard)
- Available in standard (40/10) and heavy duty (50/11) model

FREIGHT/GOODS CABINS

KLEEMANN freight cabins are fully customized and designed to handle any load up to 15.000 kg. Our flexible design and manufacturing process, allows us to adjust the specs of the cabin according to any project requirements.

Cabin walls are covered with carefully selected metal that provides additional durability and ensures long life span. Hundreds of projects worldwide are a tangible proof of the sturdiness and durability of our cabins.

These easy-to-install, heavy-duty cabins form the perfect solution for industrial use, such as supermarkets, parking centres, etc. When you need a freight cabin, then think of KLEEMANN, the expert in special constructions.



FOLDING DOORS

- Available in three types, FLAT and BUS and Modernization
- Electrical current supplier
- High quality after sales service and spare parts stock
- High endurance packaging



SEMI-AUTOMATIC LANDING DOORS

- Available in both electrostatic epoxy paint and wide range of stainless steel finishes (Inox, Mirror, etc)
- Personal selection of handles and glass (Luxury Glass)
- Easy installation and adjustment (Patented spring)
- High endurance isolated packaging
- High quality painting
- Customized frames extensions
- Spare parts stock

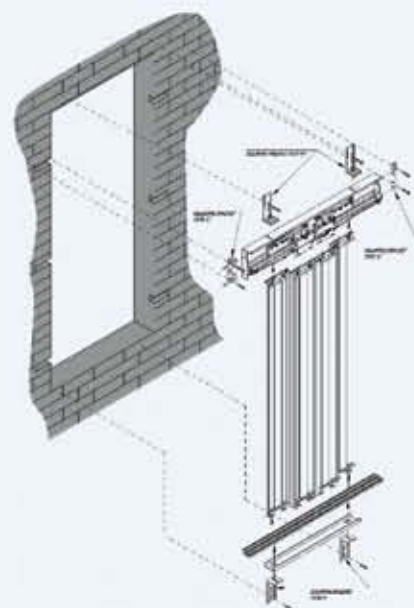


CIRCULAR DOORS

KLEFER sets the industry standards with respect to the technology and aesthetics of landing doors by introducing the automatic circular door with VVVF control. This new model encloses all advantages of automatic doors plus the fact that it reduces the height of the operator by 50%; thus, the aesthetic result is superior to any existing solution. The circular doors are categorized in three main types: epoxy / stainless steel panels, big vision or full glass panels.

MODERNIZATION DOORS

The latest model of KLEFER landing automatic lift door gives you the most practical solution for modernization. The installation takes place on the existing landing frame. This new model carries all those features that will make the modernization of your lift door an easy, cost effective and aesthetically superior project.



ELECTRONICS

CAR AND LANDING OPERATING PANELS

KLEEMANN car and landing operating panels are products of advanced technology, modern design and high functionality.

Among others, KLEEMANN COPs / LOPs features include:

- Surface mounted COPs and LOPs do not require cut-out aperture in the car wall panels
- 2 mm inox (satin or mirror) stainless steel face-plate
- Vandal – proof buttons in various designs
- COPs with back-embedded boxes with hinges and plain face plate
- Displays 7 segment or Dot Matrix or LCD
- Built-in emergency lighted frame LED 12 VDC
- Display of number of passengers and overload
- Appropriately designed megaphone recess, emergency hands-free telephone device and normal telephone set
- Braille and / or Tactile buttons
- Option to display or engrave logos
- Illuminated call acceptance (through a lighted frame LED)



- 1 Surface mounted and standard fixation COPs
- 2 Surface mounted and standard fixation LOPs
- 3 Surface mounted hall lantern fronts and with inclined faceplate
- 4 Buttons

CONTROLLERS

KLEEMANN controllers, acting as the “brain” of a lift system, are equipped with a microprocessor that is designed to operate in the most effective way.

Thanks to the technique of detachable boards and the flexible programming system, any installer with no special skills can easily adjust the controller's operations according to the exact demands of each project.



THE KLEEMANN CONTROLLER:

- Covers a wide range of lifts, from their simplest form (simplex) to coordinated lifts in groups of two (duplex), three (triplex) and four (quadraplex) up to 32 floors
- Complies with all European standards (95/16 EC, EMC and LVD Directives)
- Features the capability to adjust speed based on oil temperature (hydraulic lifts)
- Informs of any possible problems or damages via local monitoring system
- Offers the possibility of remote malfunction diagnosis through the use of a Modem
- Compatible with VVVF inverters for high speed traction lift applications

TRACTION ELEVATION SYSTEMS

In projects that require long travels and high speeds, KLEEMANN offers complete traction elevation systems or subsystems in compliance with the specifications of European legislation. Among others, the KLEEMANN traction set consists of the machine, the machine base, the car sling, the counterweight sling, governor, guide rails, and wire ropes. All the traction set components are distinguished for top manufacturing quality.

The available types of traction machines are the following:

- One or two speeds
- With VVVF drive system
- Gearless

In particular, the combination of **Gearless** machines and VVVF technology achieves:

- High speeds (up to 3,5 m / sec)
- High travels
- Smooth acceleration / deceleration for greater comfort
- High levelling and stopping accuracy that ensures ride quality
- Energy savings (up to 30%) compared with conventional technology



PRE-WIRING

The pre-wired electrical installation of KLEEMANN (for cabin, shaft and machine room) was designed to provide installers with:

- Ease of installation
- Substantial reduction of installation time
- Reduction of errors during installation
- Minimal requirements for specialised personnel
- Easy verification of the connections and speed in tracing any faults
- Fully compliance with the 95/16 EC directive



1 VVVF Controller

2 Pre-wired electrical installation



2



3

1 Laser cutting

2 Detail of car sling

3 Traction lift machines

HYDRAULIC ELEVATION SYSTEMS

The hydraulic elevation system consists of the cylinder – piston assembly, the power unit, the car sling and also the guide rails system, wire ropes, buffers etc.

KLEEMANN has long experience in the production of the main hydraulic lift components, implementing state-of-the-art manufacturing systems and strict quality control procedures.



KLEEMANN hydraulic systems are known for:

- Safety and comfort
- High quality and reliability
- Minimum installation and maintenance cost
- Low noise and vibration levels
- Long life span
- Fast delivery and capability of full customisation
- Easy installation and maintenance for new projects and modernizations
- Emergency release in case of a power failure
- Low stress on the building structure



3



4



5



6

- 1 Punching
- 2 Cylinder Honing
- 3 Car sling
- 4 Power unit
- 5 Various trades
- 6 Pistons

KLEEMANN MODERNIZATION SOLUTIONS

KLEEMANN, working closely with its customers, develops customized solutions for the modernization of older elevators targeting exceptional quality in combination with cost effectiveness.

The KLEEMANN MODERNIZATION SOLUTIONS contain:

- Comfortable transportation with strong emphasis on passengers' safety
- Superb compatibility
- High performance levels
- Energy savings
- Minimization of maintenance costs
- Modern design

KLEEMANN MODERNIZATION SOLUTIONS are highly flexible so that they can easily be adapted to the specific requirements of almost every project.



KLEEMANN MODERNIZATION SOLUTIONS

- 1 CABINS
- 2 CONTROLLERS
- 3 DOORS
- 4 COPs - LOPs
- 5 TRACTION ELEVATION SYSTEMS
- 6 HYDRAULIC ELEVATION SYSTEMS