

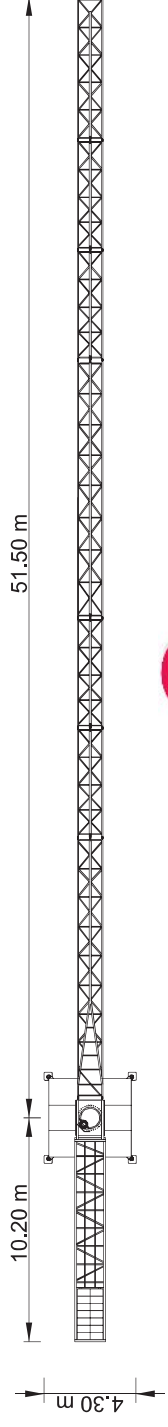
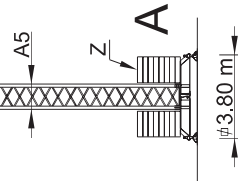
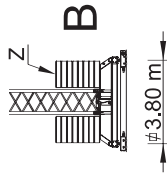
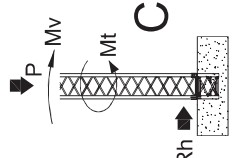
Cargas. Loads. Lasten. Charges. Carichi. Yüklər. ГРУЗОВИЦІ. НАГРУЖЕՆԻԱ

Cargas	Loads	Lasten	Charges	Carichi	Yüklər	ГРУЗОВИЦІ	НАГРУЖЕՆԻԱ	kg		m		kg		m	
								5000	2500	5000	2500	5000	2500	5000	2500
13000 kg 5x2000+ 2x1500 kg	50m	L51+L52+L53+L42+L43 L44+L45	28,4 m	2500	2500	12	15	23	28	33	40	45	50	1250	
11500 kg 5x2000+ 1x1500 kg	45m	L51+L52+L53+L42+L43 L45	29,5 m	5000	3200	15	2500	2500	2500	2100	1600	1400	1250	1400	
11000 kg 4x2000+ 2x1500 kg	40m	L51+L52+L53+L42+L45	30,3 m	5000	3300	15	5000	3300	2600	2200	1700	1500	1500	1500	
9000 kg 3x2000+ 2x1500 kg	33m	L51+L52+L53+L43+L45	30,1 m	5000	3400	15	5000	3400	2700	2200	1800	1800	1800	1800	
7000 kg 2x2000+ 2x1500 kg	28m	L51+L52+L53+L45	28 m	5000	3100	15	5000	3100	2500	2250	2250	2250	2250	2250	
5000 kg 1x2000+ 2x1500 kg	23m	L51+L53+L45	23 m	5000	2500	15	5000	2500	2500	2500	2500	2500	2500	2500	



**Reações . Reactions . Reaktionen . Reactions . Reactions . Reacciones
Reazioni . Tepkimeler . РЕАКЦИИ**

H	A/B		C	
	Z	P	Mv	P
m	kN	kN	kNm	kN
21	450	347	882	333
24	450	354	908	342
27	450	363	942	351
30	450	372	982	360
33	500	395	1026	369
36	500	406	1075	378
39	600	443	1127	387
42	750	494	1185	396



	A (mm)	B (mm)	C (mm)	kg	Code
L51	11950	1300	2250	2900	
L52	5200	1160	1650	535	
L53	5200	1160	1650	510	
L42	11820	1160	1210	820	
L43	5100	1160	1210	260	
L44	5100	1160	1210	230	530.50.12
L45	6570	1300	1210	290	
RS5 R15	2150	1320	2320	2800	
CL3	9350	1380	560	2000	
CP1	1160	320	2530	2x1500 3000	704.15.00
CP2	1160	330	3140	5x2000 10000	704.20.00
			TOTAL	23345	
A5	11985	1160	1160	3080	530.12.00
A5	6075	1160	1160	1660	530.06.00
A5	3120	1160	1160	990	530.06.01
A5	3090	1385	1385	890	530.06.03
A5	1275	1160	1160	450	530.06.02
			TOTAL	11250	630.00.03
A5	5530	500	750	1250	
	2270	360	750	2x635 1270	
			TOTAL	2520	



Características . Characteristics . Eigenschaften
 Caractéristiques . Características . Caratteristiche
 Озеліктер . Характеристики . Caratteristiche

	15 kW
	0 a 82 m/min 0 a 41 m/min
	0 a 1 rpm
	0 a 60 m/min
	15 m/min
	400 V ± 5% (50/60 Hz)
	2x5 daNm
	3 kW
	2x3 kW
	30 kVA

*opção . option . optional . option . Opzione . Sejenek . Omuz

